

# St. Mark's Episcopal Church

weekly news & updates

January 11, 2024

## Upcoming Events

### Ann Rogers's Memorial Service

1/13, Saturday 10:00 a.m.

### Access Plus Ramp Build

1/20, Saturday 8:00 a.m.

### South Texas Amateur Radio Club Field Day

1/27, Saturday 8:00 a.m.

### Annual Meeting & Potluck

1/28, Sunday 11:30 a.m.

## In This Issue

From the Rector  
Ann Rogers's Memorial  
Access Plus Ramp Build  
Annual Parish Meeting  
Missionary Erin Cottos  
Interested in Being a Pen Pal?  
Adult Bible Study  
Youth Group  
Diocesan Events  
Giving Information  
Weekly Calendar  
Helpful Links

## Sunday Worship Service

Holy Eucharist at 10:00 a.m.

[Visit our website](#)

## From the Rector Fr. Doug Wasinger



Epiphany has several meanings. The Merriam-Webster dictionary defines an epiphany as: (1) a usually sudden manifestation or perception of the essential nature or meaning of something. (2) an intuitive grasp of reality through something (such as an event) usually simple and striking. (3) an illuminating discovery, realization, or disclosure.

Please click here for [the rest of the article](#).

## Memorial for Ann Rogers



### Ann Rogers's Memorial Saturday, 1/13, at 10:00 a.m.

We will remember the life of Ann Rogers this Saturday morning in the sanctuary. An interment of her ashes will follow the service at Seaside Funeral Home and Memorial Park. Family and friends will gather at a local restaurant after that service.

The family asked that any memorial gifts be directed to St. Mark's Memorial Fund.

Here is a link to [Ann's obituary](#).

**Please continue to keep her family in your prayers.**

## Access Plus Ramp Build

### Ramp Build Saturday, 1/20, at 8:00 a.m. 2810 Riggan St.

The January ramp build is for a lady name Sylvia. She is excited at the prospect of receiving the gift of this ramp because she was on the ramp build waiting list for a year. This will bless her and her family.



The January ramp build is for a lady name Sylvia. She is excited at the prospect of receiving the gift of this ramp because she was on the ramp build waiting list for a year. This will bless her and her family.

All are welcome to come out to help. No experience is necessary. Doug Wayland's team are happy to train anyone who would like learn about the ramp building process. If this ministry interests you, just come to Sylvia's home Saturday morning and look for Doug. He always brings a carafe of coffee!

## Annual Parish Meeting & Potluck



### Annual Meeting & Potluck Lunch Sunday, 1/28

Mark you calendars for this important meeting for our parish. We'll learn about how we finished 2023 financially, watch a photo roller capturing 2023 in a video, hear reports from various ministries, look ahead at 2024, elect five new vestry members, share a potluck lunch and more. If you're interested in running for vestry, please contact the church office by calling (361) 994-0285 or emailing Judy at [judy@stmarkscc.org](mailto:judy@stmarkscc.org).

The theme for the potluck is "barbeque". So, crank up those barbeque pits, or pull out those recipes for side dishes to compliment the meat from the pit. You may sign up on the Connection Card found in your bulletin this Sunday, or contact the church office at (361) 994-0285, or email Judy at [judy@stmarkscc.org](mailto:judy@stmarkscc.org).

## Missionary Erin Cottos

### Erin Cottos Back for a Visit Sunday, January 28th

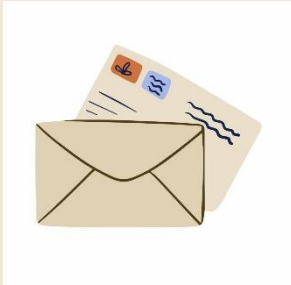
For those of you who haven't met Erin, she is a member of St. Mark's. After being here for a couple years, God called her into the mission field, specifically to Haiti, in 2010. Due to the unrest in Haiti, the Lord led her to the Baja peninsula where she has been working with Eternal Anchor to train local people in physical therapy, teach them how to make adaptive equipment from everyday items, and share her love of God with them. She also teaches students who want to learn how to help children with physical disabilities where there are limited resources. She does this as a faculty member of the University of Texas Medical Branch in Galveston twice a year.



She will be back home with us Sunday, the 28th, to share with us what she's been doing this past year. She usually speaks during the service, but this year since that Sunday is also our annual meeting, we've invited her to speak during the meeting. The loose offering and any designated gifts will go to support her ministry work.

**So, mark you calendars for January 28th's annual meeting  
in order to hear about Erin's adventures and visit with her!**

## Interested in Being a Pen Pal?



### An Inmate is Seeking a Pen Pal

A man imprisoned in Maryland stumbled upon our website and felt led to call the church office last week. He is a Christian and is seeking to correspond with another adult Christian man while he serves the rest of his sentence, which is a little less than three years. He has already sent a letter to share with whomever would like to correspond with him.

**Adult Men:** Please pray about whether you should be the person who walks through this part of life with him. If you are led to do this, please let Judy know and she will give you his first letter and his address.

## Adult Bible Study

### Adult Bible Study of the Gospel of Mark

All are welcome to join the Bible study. Come to one week, or come to them all. The class meets in the fellowship hall at noon and ends around 1:00 p.m. Grab a cup of coffee and some snacks, then head over to the designated tables to sit down.



Here are links for past study dates and the upcoming Sunday:

[the introduction](#) to the class

[map of the Sea of Galilee](#)

[chapter one](#) study notes

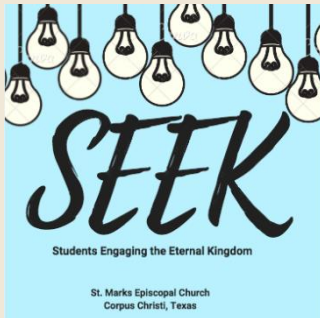
[chapter two](#) study notes

[chapter three](#) study notes

[chapter four](#) study notes

[chapter five](#) study notes

## Youth Group & Children's Ministry



### SEEK Youth Group Meets Sundays at 11:30 a.m.

Youth group will begin meeting THIS Sunday, right after the worship service, so grab a snack and a drink, and bring them with you to the youth room. Come see everyone and catch up!

## Diocesan Events

### Diocesan News



**Day of Deeper Understanding and Diocesan Ultreya**--All Cursillistas, sponsors, and team members are invited to the upcoming "Day of Deeper Understanding" and Diocesan Ultreya Saturday, January 20th at St John's, New Braunfels, 10:00 a.m. to 2:00 p.m. at 312 S Guenther Ave. Please join us to welcome the new Cursillistas from **Cursillo #289** and **#290** and enjoy a day of fellowship in community. Please bring a potluck dish to share (from the H.E.B. deli is fine) and your songbook.

**Diocesan ENews**--Sign up for the [Diocese of West Texas ENews](#) by clicking the link. Scroll down to the bottom of the page and click on a white button that has "Let's Connect" written in it.

## Ways to Support God's Kingdom through St. Mark's

**THANK YOU TO ALL WHO  
SUPPORT ST. MARK'S CHURCH!**



## Thank you for Your Generosity

Is the Lord blessing you? Are you grateful for what He has done in your life? Remember His Church. Though we have experienced limitations for worshiping together, we still have ministries to support and salaries and bills to pay. Give out of faith, thanksgiving, and generosity, and never out of guilt. If you are blessed to be able to give, here are several ways to do that:

- Online through our website. There is a blue "Giving" button at the bottom of each page. Just click on that and it will take you to our online EGiving page. You will need to set up a user profile, and then you can set up a one-time gift or recurring gifts. You can also give through the ["Donate to St. Mark's"](#) link.
- Through your cell phone using the app, **Vanco Mobile**. To get the app, go to the app store and search for "Vanco Mobile". The icon background is dark purple with a white circle and a purple letter "V" in the center. Download the app and follow the prompts. You can use it to set up a one-time gift or recurring gifts.
- You may also use the QR code below.
- Mail in your check to: St. Mark's Church, 2727 Airline Rd, CC, TX 78414. We have a drop-in mailbox that is locked at all times. We check the mail every day, so your check will be secure.
- Drop your check off at the church. Just put it in the locked mailbox to the left of the red doors at the fellowship hall.
- Bequest giving is another way to give to St. Mark's with a gift through your estate. Simply list St. Mark's in your will.

**THANK YOU** for helping spread the Kingdom  
through your continuing support  
of St. Mark's Church.



# Weekly Calendar

## Calendar & Ministry Schedule

Here is the link to the [January schedule](#) for our ministries, which is an ongoing work in progress. Please check each week to see if there are any changes. Here's a link to the [January calendar](#).

### January 13 - Saturday

10:00 a.m. - Ann Rogers's Memorial Service--Sanctuary

### January 14- Sunday

10:00 a.m. - Holy Eucharist--Sanctuary

11:30 a.m. - Coffee Hour

11:30 a.m. - SEEK Youth Group--Fellowship Hall Youth Room

12:00 p.m. - Study of the Gospel of Mark--Fellowship Hall

### January 15 - Monday

9:30 a.m. - Staff Meeting--Fellowship Hall Library

### January 16 - Tuesday

7:30 a.m. - Women's Reunion Group--Corner Bakery, 4938 S. Staples St.

### January 17 - Wednesday

11:30 a.m. - Lunch with the Old Guys--Silverado Smokehouse, 4522 S. Staples St.

12:00 p.m. - Prayer Group--Fellowship Hall Library

6:30 p.m. - Men's Reunion Group--Nolan's Restaurant, 7426 S. Staples St.

### January 20 - Saturday

8:00 a.m. - Access Plus Ramp Build--2810 Riggan St.

**Below you will find several links to websites or  
Facebook Pages that you might find helpful.**

[St. Mark's Episcopal Church](#)

[Donate to St. Mark's Church](#)

[St. Mark's Church Facebook Page](#)

[Diocese of West Texas](#)

[Diocesan Newsletter and Reflection Magazine](#)

ST. MARK'S EPISCOPAL CHURCH  
2727 Airline Rd  
(361) 994-0285  
[www.stmarkscc.org](http://www.stmarkscc.org)



[Subscribe to our Enews](#)